

# Intraoral Scanner

S6000



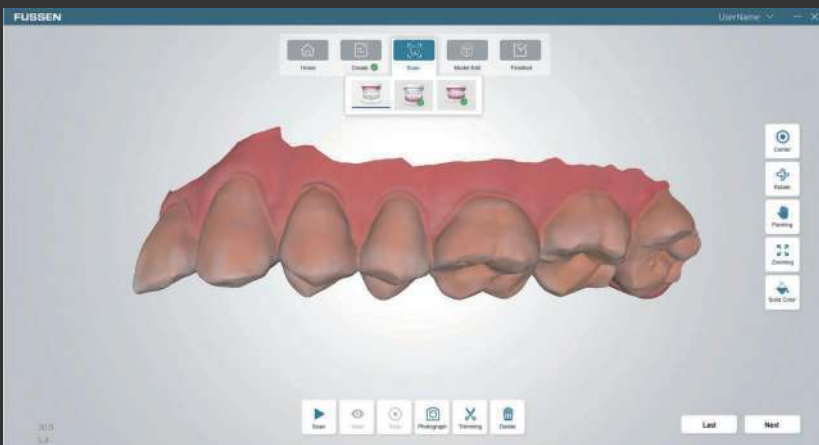


## Ergonomic Size & Weight

- Scanner dimension 240mm(L) x39.8mm(W)x 57mm(H)
  - Weight 350g
  - Scanner tip dimension 18.5mm(H)x19mm(W)
- Fits children as well as elderly patients

## Powder free

- Improve patients comfort
- Simplify clinic operation procedure and difficulty



## Chromoscan

Colored scanning that can show the true dental situation in vivo in real-time

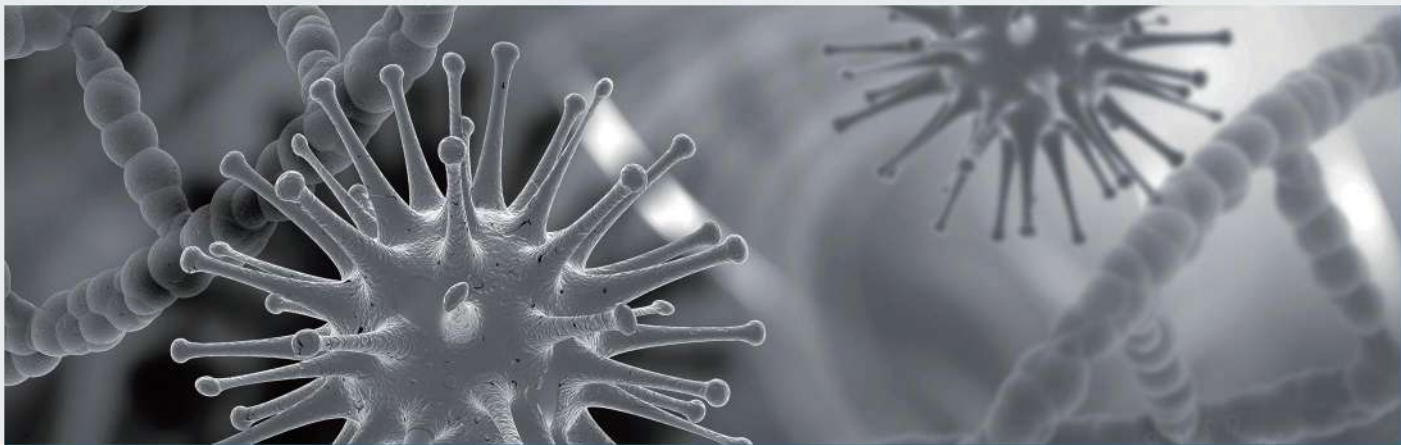


## Intraoral Camera

Take intraoral photo during scanning which can assist operator to communicate with patients

## Fast with high precision

- High accuracy that can cover all different indications
- Whole scanning process takes  $\leq 3$  minutes approximately which is much faster than taking traditional impression



## Disinfection of scanner tips

- Auto-clavable with 121°C and 134°C  
or sterilization with disinfectant





## Occlusion relationship analysis

- Assist operator to check the occlusion relationship and interocclusal space by view the color scale

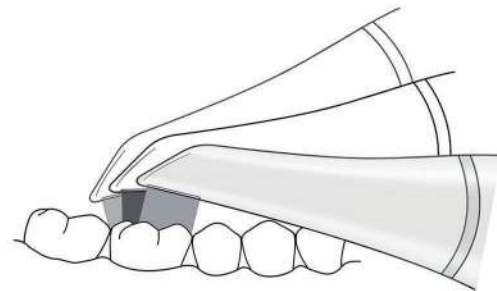
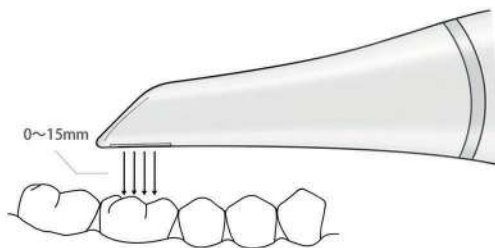


## Intelligent optimization

- Automatically remove any redundant data such as gloves, tongue etc

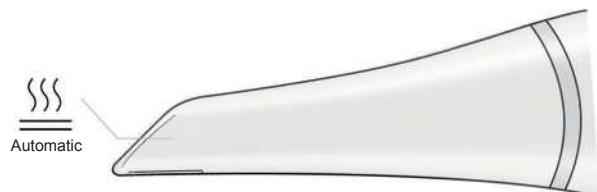
## Moderate depth of field

15mm depth of field to provide scanning efficiency and ensure data integrity



## Built-in anti-fog module

- Automatically mirror heating to ensure data accuracy



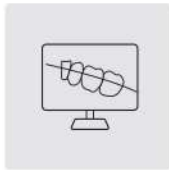




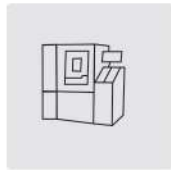
## Chair-side restoration digital solution workflow



1. Intraoral data acquisition



2. Design



3. Milling



4. Completion



5. Try-in

## Chair-side implant digital solution workflow



1. Intraoral data acquisition



2. CT data acquisition



3. Implant planning



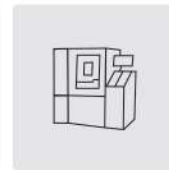
4. Guided surgery



5. Intraoral data acquisition



6. Design



7. Milling



8. Completion

## Digital orthodontic Chair-side immediate solution



1. Intraoral data acquisition



2. Design



3. 3D model printing



4. Pressure moulding



5. Completion



6. Try-in

## Digital clinic connects dental lab



1. Intraoral data acquisition



2. Order online



3. Clinic to laboratory digital solution workflow



4. Manufacturing







## Traditional Impression

Takes 10 Mins

Strong gag reflex

Poor comfort

Complex procedure

Colorless plater model



## Digital impression

Takes 5 Mins

No gag reflex

Excellent comfort

Simple procedure

Real color model



## Clinical indicaitons

It is applicatable on most of different indications  
include orthodontics,restoration,and implant



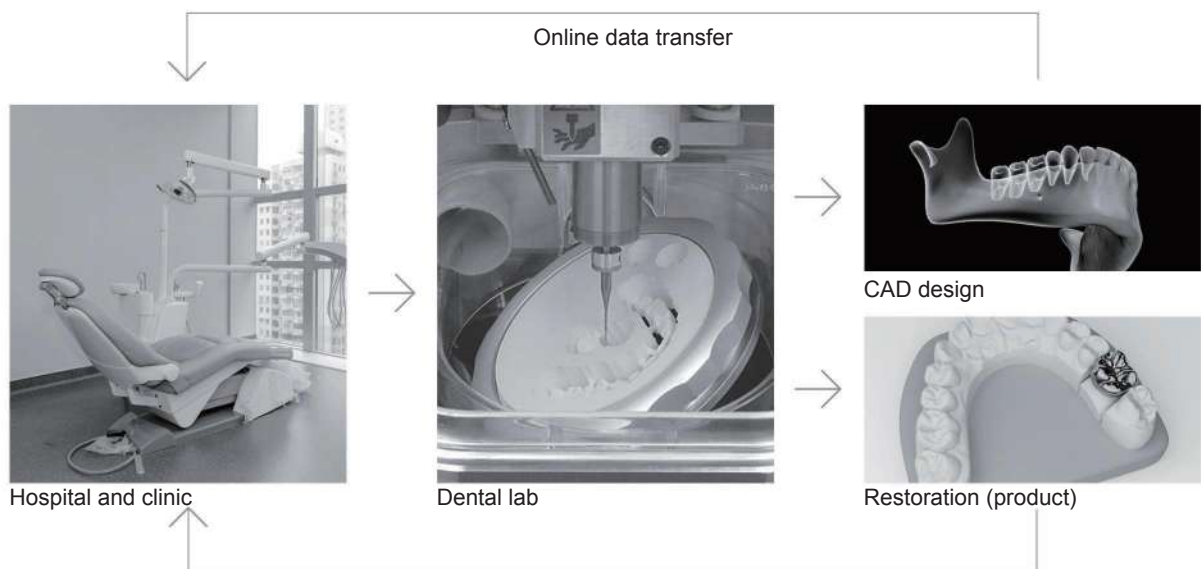
## Cloud platform

Multifunction cloud platform which will provide data storage, data sharing  
online restoration, implant, and orthodontics appliance



## Data format

STL,PLY,OBJ can be exported, which is compatible with any CAD software





## Technical specification

### Intraoral scanner

#### Product type

Portable intraoral scanner

#### Anti-fog technology

Built-in module

#### Sensor

High speed CMOS

#### Disinfection methods

121 & 134 autoclavable

#### Splicing technology

Imaging Technique Accur-3D

#### Output format

STL PLY OBJ

#### Scan type

Power free colored scan

#### Image

Colored

#### Scan mode

3D video scanning

#### Scan speed

5 minutes

#### Scan depth of field

15mm

#### Length of connecting cable

2m

#### Scanner tip

18.5mm(H) x 19mm(W)

#### Weight

350g

#### Connection

USB 3.0

#### Scanner

240mm(L) x 39.8mm(W) x 57mm(H)

## Digital Dental Image Eco-system

Rounded digital dental image aquisition system, and integrate cloud platform that provide effective services to the clinic



CBCT



Intraoral Scanner



Phosphor Plate  
Scanner/PSP Scanner



Digital X-ray Sensor



Handheld X-ray Generator



**Ajax Dental Supplies Ltd.**

Add.: 10/19 Cornhill Street Ferntree Gully VIC 3156 Australia

[www.ajaxdent.com.au](http://www.ajaxdent.com.au) E-Mail: [info@ajaxdent.com.au](mailto:info@ajaxdent.com.au)

Tel: 03 9879 3801

Fax: +86-020-84847118

Mobile: 0402339905



[Http://www.ajaxdent.com.au](http://www.ajaxdent.com.au)